

PROVISIONAL KEY STAGE TWO RESULTS 2015
St Mark's Elm Tree CE Primary (DfES No: 2006)
Whole Year 6

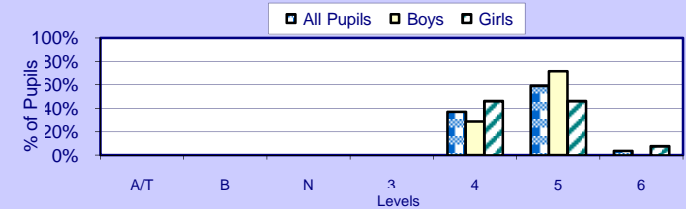
COHORT DETAILS

Boys	Girls	All Pupils
14	13	27

READING TEST

		Level Breakdown						
		A/T	B	N	3	4	5	6
Boys	No. of Pupils	0	0	0	0	4	10	0
	% of Pupils	0%	0%	0%	0%	29%	71%	0%
Girls	No. of Pupils	0	0	0	0	6	6	1
	% of Pupils	0%	0%	0%	0%	46%	46%	8%
All Pupils	No. of Pupils	0	0	0	0	10	16	1
	% of Pupils	0%	0%	0%	0%	37%	59%	4%

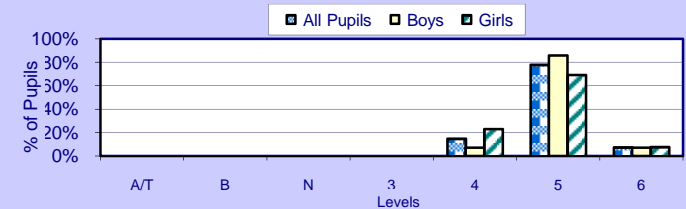
Summary Statistics		
Level 4+	Level 5+	APS
14	10	31.3
100%	71%	
13	7	30.7
100%	54%	
27	17	31.0
100%	63%	



SPELLING, PUNCTUATION AND GRAMMAR TEST

		Level Breakdown						
		A/T	B	N	3	4	5	6
Boys	No. of Pupils	0	0	0	0	1	12	1
	% of Pupils	0%	0%	0%	0%	7%	86%	7%
Girls	No. of Pupils	0	0	0	0	3	9	1
	% of Pupils	0%	0%	0%	0%	23%	69%	8%
All Pupils	No. of Pupils	0	0	0	0	4	21	2
	% of Pupils	0%	0%	0%	0%	15%	78%	7%

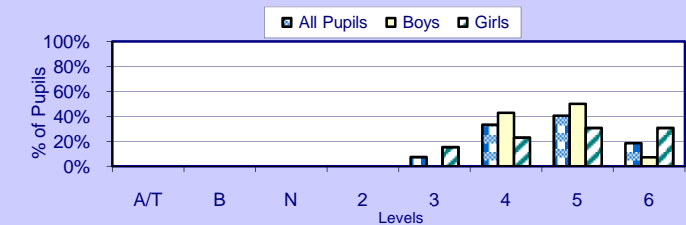
Summary Statistics		
Level 4+	Level 5+	APS
14	13	33.0
100%	93%	
13	10	32.1
100%	77%	
27	23	32.6
100%	85%	



MATHEMATICS TEST

		Level Breakdown							
		A/T	B	N	2	3	4	5	6
Boys	No. of Pupils	0	0	0	0	0	6	7	1
	% of Pupils	0%	0%	0%	0%	0%	43%	50%	7%
Girls	No. of Pupils	0	0	0	0	2	3	4	4
	% of Pupils	0%	0%	0%	0%	15%	23%	31%	31%
All Pupils	No. of Pupils	0	0	0	0	2	9	11	5
	% of Pupils	0%	0%	0%	0%	7%	33%	41%	19%

Summary Statistics		
Level 4+	Level 5+	APS
14	8	30.9
100%	57%	
11	8	31.6
85%	62%	
25	16	31.2
93%	59%	



PROVISIONAL KEY STAGE TWO RESULTS 2015
St Mark's Elm Tree CE Primary (DfES No: 2006)
Whole Year 6

COHORT DETAILS

Boys	Girls	All Pupils
14	13	27

COMBINED READING, WRITING AND MATHS[†] (CRWM)

		Level 4+ [#]	Level 5+ [#]	APS~
Boys	No. of Pupils	14	5	30.5
	% of Pupils	100%	36%	
Girls	No. of Pupils	11	5	31.0
	% of Pupils	85%	38%	
All Pupils	No. of Pupils	25	10	30.8
	% of Pupils	93%	37%	

[†] Reading Test, Writing Teacher Assessment & Maths Test

[#]Percentage of pupils achieving the stated level in Reading, Writing & Maths

~ Average Point Score in Reading, Writing and Maths. $((\text{Reading} + \text{Writing}) / 2 + \text{Maths}) / 2$

PROVISIONAL KEY STAGE TWO RESULTS 2015
St Mark's Elm Tree CE Primary (DfES No: 2006)
Whole Year 6

COHORT DETAILS

Boys	Girls	All Pupils
14	13	27

2 LEVELS PROGRESS - READING

		Yes	No	Not Included
Boys	No. of Pupils	13	0	1
	% of Pupils	100%	0%	N/A
Girls	No. of Pupils	13	0	0
	% of Pupils	100%	0%	N/A
All Pupils	No. of Pupils	26	0	1
	% of Pupils	100%	0%	N/A

2 LEVELS PROGRESS - WRITING

		Yes	No	Not Included
Boys	No. of Pupils	13	0	1
	% of Pupils	100%	0%	N/A
Girls	No. of Pupils	13	0	0
	% of Pupils	100%	0%	N/A
All Pupils	No. of Pupils	26	0	1
	% of Pupils	100%	0%	N/A

2 LEVELS PROGRESS - MATHS

		Yes	No	Not Included
Boys	No. of Pupils	13	0	1
	% of Pupils	100%	0%	N/A
Girls	No. of Pupils	11	2	0
	% of Pupils	85%	15%	N/A
All Pupils	No. of Pupils	24	2	1
	% of Pupils	92%	8%	N/A

3 LEVELS PROGRESS - READING

		Yes	No	Not Included
Boys	No. of Pupils	7	6	1
	% of Pupils	54%	46%	N/A
Girls	No. of Pupils	6	7	0
	% of Pupils	46%	54%	N/A
All Pupils	No. of Pupils	13	13	1
	% of Pupils	50%	50%	N/A

3 LEVELS PROGRESS - WRITING

		Yes	No	Not Included
Boys	No. of Pupils	10	3	1
	% of Pupils	77%	23%	N/A
Girls	No. of Pupils	8	5	0
	% of Pupils	62%	38%	N/A
All Pupils	No. of Pupils	18	8	1
	% of Pupils	69%	31%	N/A

3 LEVELS PROGRESS - MATHS

		Yes	No	Not Included
Boys	No. of Pupils	8	5	1
	% of Pupils	62%	38%	N/A
Girls	No. of Pupils	8	5	0
	% of Pupils	62%	38%	N/A
All Pupils	No. of Pupils	16	10	1
	% of Pupils	62%	38%	N/A

For all progress calculations, percentages exclude the not included pupils. For the full definition of which pupils are included in the progress calculations please look at the guidance.

PROVISIONAL KEY STAGE TWO RESULTS 2015
St Mark's Elm Tree CE Primary (DfES No: 2006)
Whole Year 6

COHORT DETAILS

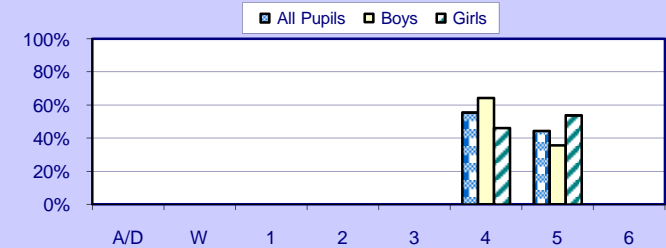
Boys	Girls	All Pupils
14	13	27

ENGLISH TEACHER ASSESSMENT

		Level Breakdown							
		A/D	W	1	2	3	4	5	6
Boys	No. of Pupils	0	0	0	0	0	9	5	0
	% of Pupils	0%	0%	0%	0%	0%	64%	36%	0%
Girls	No. of Pupils	0	0	0	0	0	6	7	0
	% of Pupils	0%	0%	0%	0%	0%	46%	54%	0%
All Pupils	No. of Pupils	0	0	0	0	0	15	12	0
	% of Pupils	0%	0%	0%	0%	0%	56%	44%	0%

Summary Statistics

Level 4+	Level 5+
14	5
100%	36%
13	7
100%	54%
27	12
100%	44%

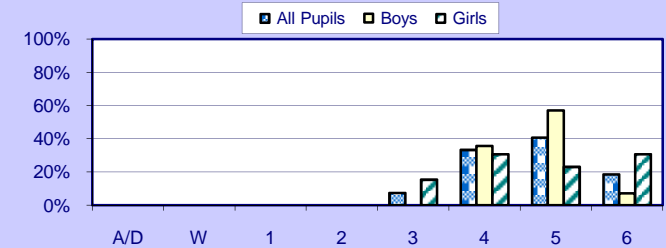


MATHEMATICS TEACHER ASSESSMENT

		Level Breakdown							
		A/D	W	1	2	3	4	5	6
Boys	No. of Pupils	0	0	0	0	0	5	8	1
	% of Pupils	0%	0%	0%	0%	0%	36%	57%	7%
Girls	No. of Pupils	0	0	0	0	2	4	3	4
	% of Pupils	0%	0%	0%	0%	15%	31%	23%	31%
All Pupils	No. of Pupils	0	0	0	0	2	9	11	5
	% of Pupils	0%	0%	0%	0%	7%	33%	41%	19%

Summary Statistics

Level 4+	Level 5+
14	9
100%	64%
11	7
85%	54%
25	16
93%	59%

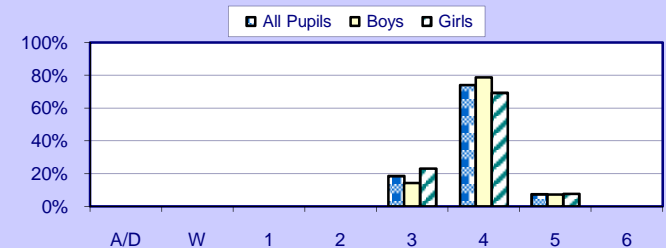


SCIENCE TEACHER ASSESSMENT

		Level Breakdown							
		A/D	W	1	2	3	4	5	6
Boys	No. of Pupils	0	0	0	0	2	11	1	0
	% of Pupils	0%	0%	0%	0%	14%	79%	7%	0%
Girls	No. of Pupils	0	0	0	0	3	9	1	0
	% of Pupils	0%	0%	0%	0%	23%	69%	8%	0%
All Pupils	No. of Pupils	0	0	0	0	5	20	2	0
	% of Pupils	0%	0%	0%	0%	19%	74%	7%	0%

Summary Statistics

Level 4+	Level 5+
12	1
86%	7%
10	1
77%	8%
22	2
81%	7%



PROVISIONAL KEY STAGE TWO RESULTS 2015
St Mark's Elm Tree CE Primary (DfES No: 2006)
Whole Year 6

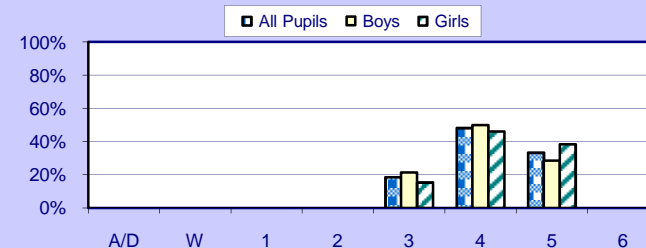
COHORT DETAILS

Boys	Girls	All Pupils
14	13	27

(EN1) SPEAKING AND LISTENING

		Level Breakdown							
		A/D	W	1	2	3	4	5	6
Boys	No. of Pupils	0	0	0	0	3	7	4	0
	% of Pupils	0%	0%	0%	0%	21%	50%	29%	0%
Girls	No. of Pupils	0	0	0	0	2	6	5	0
	% of Pupils	0%	0%	0%	0%	15%	46%	38%	0%
All Pupils	No. of Pupils	0	0	0	0	5	13	9	0
	% of Pupils	0%	0%	0%	0%	19%	48%	33%	0%

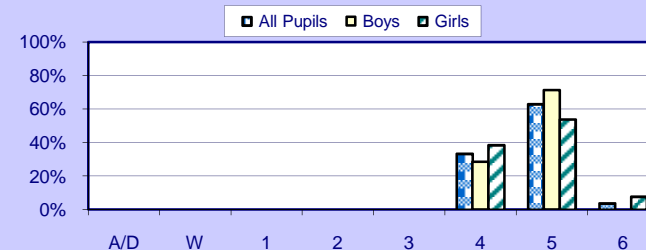
Summary Statistics	
Level 4+	Level 5+
11	4
79%	29%
11	5
85%	38%
22	9
81%	33%



(EN2) READING

		Level Breakdown							
		A/D	W	1	2	3	4	5	6
Boys	No. of Pupils	0	0	0	0	0	4	10	0
	% of Pupils	0%	0%	0%	0%	0%	29%	71%	0%
Girls	No. of Pupils	0	0	0	0	0	5	7	1
	% of Pupils	0%	0%	0%	0%	0%	38%	54%	8%
All Pupils	No. of Pupils	0	0	0	0	0	9	17	1
	% of Pupils	0%	0%	0%	0%	0%	33%	63%	4%

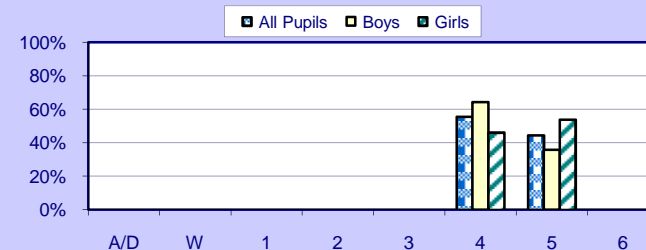
Summary Statistics	
Level 4+	Level 5+
14	10
100%	71%
13	8
100%	62%
27	18
100%	67%



(EN3) WRITING

		Level Breakdown							
		A/D	W	1	2	3	4	5	6
Boys	No. of Pupils	0	0	0	0	0	9	5	0
	% of Pupils	0%	0%	0%	0%	0%	64%	36%	0%
Girls	No. of Pupils	0	0	0	0	0	6	7	0
	% of Pupils	0%	0%	0%	0%	0%	46%	54%	0%
All Pupils	No. of Pupils	0	0	0	0	0	15	12	0
	% of Pupils	0%	0%	0%	0%	0%	56%	44%	0%

Summary Statistics		
Level 4+	Level 5+	APS
14	5	29.1
100%	36%	
13	7	30.2
100%	54%	
27	12	29.7
100%	44%	



PROVISIONAL KEY STAGE TWO RESULTS 2015
St Mark's Elm Tree CE Primary (DfES No: 2006)
Whole Year 6

COHORT DETAILS

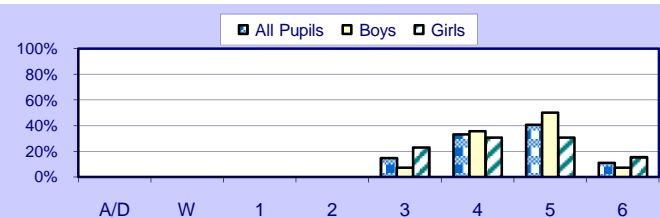
Boys	Girls	All Pupils
14	13	27

(MA1) USING AND APPLYING MATHS

		Level Breakdown							
		A/D	W	1	2	3	4	5	6
Boys	No. of Pupils	0	0	0	0	1	5	7	1
	% of Pupils	0%	0%	0%	0%	7%	36%	50%	7%
Girls	No. of Pupils	0	0	0	0	3	4	4	2
	% of Pupils	0%	0%	0%	0%	23%	31%	31%	15%
All Pupils	No. of Pupils	0	0	0	0	4	9	11	3
	% of Pupils	0%	0%	0%	0%	15%	33%	41%	11%

Summary Statistics

Level 4+	Level 5+
13	8
93%	57%
10	6
77%	46%
23	14
85%	52%

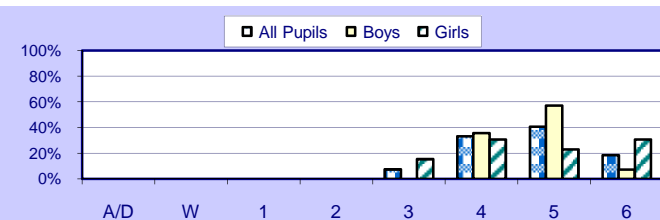


(MA2) NUMBER AND ALGEBRA

		Level Breakdown							
		A/D	W	1	2	3	4	5	6
Boys	No. of Pupils	0	0	0	0	0	5	8	1
	% of Pupils	0%	0%	0%	0%	0%	36%	57%	7%
Girls	No. of Pupils	0	0	0	0	2	4	3	4
	% of Pupils	0%	0%	0%	0%	15%	31%	23%	31%
All Pupils	No. of Pupils	0	0	0	0	2	9	11	5
	% of Pupils	0%	0%	0%	0%	7%	33%	41%	19%

Summary Statistics

Level 4+	Level 5+
14	9
100%	64%
11	7
85%	54%
25	16
93%	59%

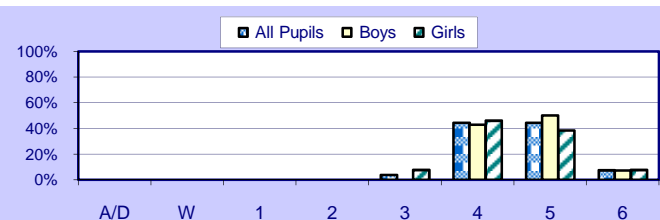


(MA3) SHAPE, SPACE AND MEASURES

		Level Breakdown							
		A/D	W	1	2	3	4	5	6
Boys	No. of Pupils	0	0	0	0	0	6	7	1
	% of Pupils	0%	0%	0%	0%	0%	43%	50%	7%
Girls	No. of Pupils	0	0	0	0	1	6	5	1
	% of Pupils	0%	0%	0%	0%	8%	46%	38%	8%
All Pupils	No. of Pupils	0	0	0	0	1	12	12	2
	% of Pupils	0%	0%	0%	0%	4%	44%	44%	7%

Summary Statistics

Level 4+	Level 5+
14	8
100%	57%
12	6
92%	46%
26	14
96%	52%

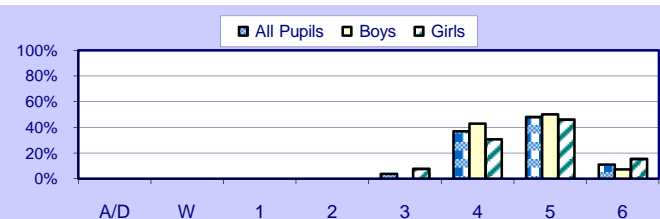


(MA4) HANDLING DATA

		Level Breakdown							
		A/D	W	1	2	3	4	5	6
Boys	No. of Pupils	0	0	0	0	0	6	7	1
	% of Pupils	0%	0%	0%	0%	0%	43%	50%	7%
Girls	No. of Pupils	0	0	0	0	1	4	6	2
	% of Pupils	0%	0%	0%	0%	8%	31%	46%	15%
All Pupils	No. of Pupils	0	0	0	0	1	10	13	3
	% of Pupils	0%	0%	0%	0%	4%	37%	48%	11%

Summary Statistics

Level 4+	Level 5+
14	8
100%	57%
12	8
92%	62%
26	16
96%	59%



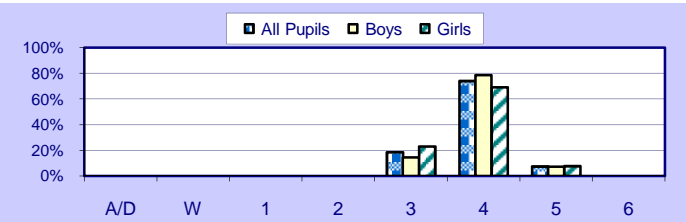
PROVISIONAL KEY STAGE TWO RESULTS 2015
St Mark's Elm Tree CE Primary (DfES No: 2006)
Whole Year 6

COHORT DETAILS

Boys	Girls	All Pupils
14	13	27

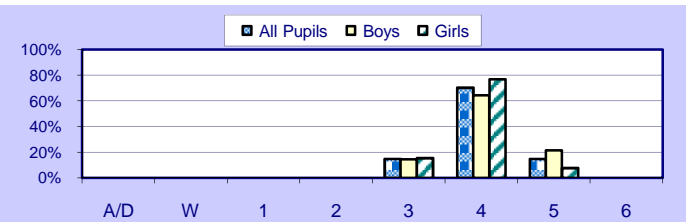
(SC1) SCIENTIFIC ENQUIRY

		Level Breakdown								Summary Statistics	
		A/D	W	1	2	3	4	5	6	Level 4+	Level 5+
Boys	No. of Pupils	0	0	0	0	11	1	1	0	12	1
	% of Pupils	0%	0%	0%	0%	14%	79%	7%	0%	86%	7%
Girls	No. of Pupils	0	0	0	0	3	9	1	0	10	1
	% of Pupils	0%	0%	0%	0%	23%	69%	8%	0%	77%	8%
All Pupils	No. of Pupils	0	0	0	0	5	20	2	0	22	2
	% of Pupils	0%	0%	0%	0%	19%	74%	7%	0%	81%	7%



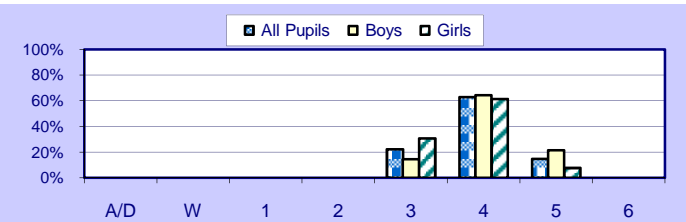
(SC2) LIFE PROCESSES AND LIVING THINGS

		Level Breakdown								Summary Statistics	
		A/D	W	1	2	3	4	5	6	Level 4+	Level 5+
Boys	No. of Pupils	0	0	0	0	2	9	3	0	12	3
	% of Pupils	0%	0%	0%	0%	14%	64%	21%	0%	86%	21%
Girls	No. of Pupils	0	0	0	0	2	10	1	0	11	1
	% of Pupils	0%	0%	0%	0%	15%	77%	8%	0%	85%	8%
All Pupils	No. of Pupils	0	0	0	0	4	19	4	0	23	4
	% of Pupils	0%	0%	0%	0%	15%	70%	15%	0%	85%	15%



(SC3) MATERIALS AND THEIR PROPERTIES

		Level Breakdown								Summary Statistics	
		A/D	W	1	2	3	4	5	6	Level 4+	Level 5+
Boys	No. of Pupils	0	0	0	0	2	9	3	0	12	3
	% of Pupils	0%	0%	0%	0%	14%	64%	21%	0%	86%	21%
Girls	No. of Pupils	0	0	0	0	4	8	1	0	9	1
	% of Pupils	0%	0%	0%	0%	31%	62%	8%	0%	69%	8%
All Pupils	No. of Pupils	0	0	0	0	6	17	4	0	21	4
	% of Pupils	0%	0%	0%	0%	22%	63%	15%	0%	78%	15%



(SC4) PHYSICAL PROCESSES

		Level Breakdown								Summary Statistics	
		A/D	W	1	2	3	4	5	6	Level 4+	Level 5+
Boys	No. of Pupils	0	0	0	0	2	11	1	0	12	1
	% of Pupils	0%	0%	0%	0%	14%	79%	7%	0%	86%	7%
Girls	No. of Pupils	0	0	0	0	4	8	1	0	9	1
	% of Pupils	0%	0%	0%	0%	31%	62%	8%	0%	69%	8%
All Pupils	No. of Pupils	0	0	0	0	6	19	2	0	21	2
	% of Pupils	0%	0%	0%	0%	22%	70%	7%	0%	78%	7%

