

The drawings should not be scaled. All dimensions must be checked on site and contractor to report any omissions or errors to the contract administrator.

NOTES



Rev	Description	On	Off	Date
	PRELIMINARY			
	APPROVAL			
	INFORMATION			
	TENDER			
	CONSTRUCTION			



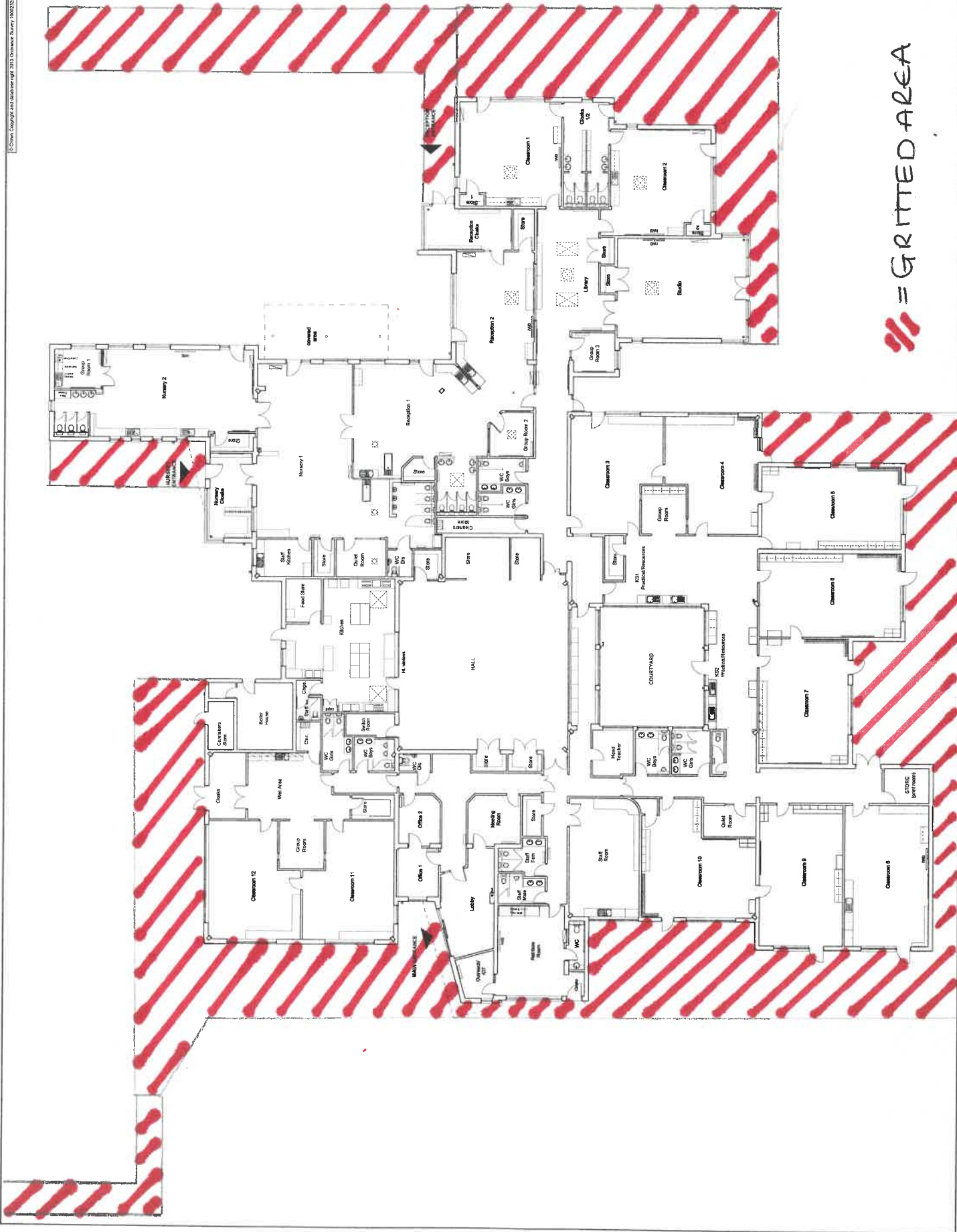
Stockton-on-Tees
BOROUGH COUNCIL

Economic Growth & Development Services
 100, Victoria Road, Stockton-on-Tees, Cleveland, TS16 6JL
 Tel: 01642 220000 Fax: 01642 220001
 Email: info@egds.co.uk Website: www.egds.co.uk

Project
 St Mark's Elm Tree Primary School
 Proposed Extensions and Remodelling

Contract
 Proposed Ground Floor Plan
 AS BUILT

Date	By	For
Sept 2016	MS	AB
	MS	AB
	MS	AB



= GRITTED AREA